

PS SERIES

HIGH SPEED DOOR DRIVES



PS-50-100-45	PS-50-45-95	PS-50-60-95	PS-50-40-140	PS-50-60-140	PS-63-160-45	PS-63-80-90	PS-63-60-135-FI
--------------	-------------	-------------	--------------	--------------	--------------	-------------	-----------------

Mechanical Properties

Output Torque	Nm	100	45	60	40	60	160	80	60
Output Speed	rpm	45	95	95	140	140	45	90	135
Output Shaft ¹	mm	25,0 25,4 30,0 31,75	25,0 30,0	25,0 30,0	25,0 30,0	25,0 30,0	25,0 30,0	25,0 30,0	25,0 30,0
Max. Cycles Per Hour ²	h	20	30	30	45	30	20	30	45
Limit Switch Range	rev	20	20	20	20	20	20	20	20
Max. output speed OPEN / CLOSE for frequency inverter operation	rpm	78 / 50	165 / 100	166 / 100	200 / 140	200 / 140	78 / 50	155 / 100	200 / 140

Electrical Properties

Motor Power	kW	0,75	0,55	0,75	0,75	1,10	1,10	1,10	1,10
Operating Voltage	V	3N~400	3N~400	3N~400	3N~400	3N~400	3N~400	3N~400	3N~400
Operating Frequency	Hz	50/60	50/60	50/60	50/60	50/60	50/60	50/60	50/60
Operating Current ³	A	3,6/1,9	2,8/1,6	3,6/1,9	3,6/1,9	5,0/2,9	5,0/2,9	5,2/3,0	5,2/3,0
Fuse Protection, On Site	A	10	10	10	10	10	10	10	10
Duty Types	ED	S3-%60	S3-%60	S3-%60	S3-%60	S3-%60	S3-%60	S3-%60	S3-%60
IP Protection Class	IP	54	54	54	54	54	54	54	54
Temperature Range ⁴	°C	-20 +40 (+60)	-20 +40 (+60)	-20 +40 (+60)	-20 +40 (+60)	-20 +40 (+60)	-20 +40 (+60)	-20 +40 (+60)	-20 +40 (+60)
Working Noise Level	dB (A)	< 70	< 70	< 70	< 70	< 70	< 70	< 70	< 70

Application

	PIPE (Ø)	50 - (87) Hz	50 - (87) Hz	50 - (87) Hz	50 - (87) Hz	50 - (87) Hz	50 - (87) Hz	50 - (87) Hz	50 - (87) Hz
Weights That Motors Can Lift According To Winding Diameter For PS Roll Door (Kg)	101,6	129 - (90)	58 - (41)	77 - (54)	52 - (36)	77 - (54)	206 - (144)	103 - (72)	77 - (54)
	108,0	123 - (86)	55 - (39)	74 - (52)	49 - (34)	74 - (52)	195 - (137)	98 - (69)	74 - (52)
	114,3	117 - (82)	53 - (37)	70 - (49)	47 - (33)	70 - (49)	188 - (131)	94 - (66)	70 - (49)
	133,0	103 - (72)	46 - (33)	62 - (43)	41 - (29)	62 - (43)	165 - (116)	83 - (58)	62 - (43)
	159,0	99 - (69)	44 - (31)	59 - (42)	40 - (28)	59 - (42)	158 - (111)	79 - (55)	59 - (42)
	177,8	89 - (62)	40 - (28)	53 - (37)	35 - (25)	53 - (37)	142 - (99)	71 - (50)	53 - (37)
	193,7	75 - (52)	34 - (23)	45 - (31)	30 - (21)	45 - (31)	119 - (84)	60 - (42)	45 - (31)
219,1	67 - (47)	30 - (21)	40 - (28)	55 - (39)	37 - (26)	25 - (17)	37 - (26)	55 - (39)	

Weights That Motors Can Lift According To Winding Diameter For PS Folding Door (Kg)	101,6	152 - (106)	68 - (48)	91 - (64)	61 - (42)	91 - (64)	243 - (170)	121 - (85)	91 - (64)
	108,0	143 - (100)	64 - (45)	86 - (60)	57 - (40)	86 - (60)	229 - (160)	114 - (80)	86 - (60)
	114,0	136 - (95)	61 - (43)	82 - (57)	54 - (38)	82 - (57)	217 - (152)	109 - (76)	82 - (57)
	133,0	117 - (82)	53 - (37)	70 - (49)	47 - (33)	70 - (49)	188 - (131)	94 - (66)	70 - (49)
	140,0	112 - (78)	50 - (35)	67 - (47)	45 - (31)	67 - (47)	179 - (125)	89 - (63)	67 - (47)
	159,0	99 - (69)	44 - (31)	59 - (42)	40 - (28)	59 - (42)	158 - (111)	79 - (55)	59 - (42)
	193,7	82 - (57)	37 - (26)	49 - (34)	33 - (23)	49 - (34)	131 - (91)	65 - (46)	49 - (34)
219,1	72 - (51)	33 - (23)	43 - (30)	29 - (20)	43 - (30)	116 - (81)	58 - (41)	43 - (30)	

Maximum suspended weight in kg

		PS-85-300-35	PS-85-400-35	PS-85-140-90	PS-85-200-90-HD	PS-85-250-90-HD	PS-85-100-140-FI	PS-85-130-140-FI-HD
--	--	--------------	--------------	--------------	-----------------	-----------------	------------------	---------------------

Mechanical Properties

Output Torque	Nm	300	400	140	200	250	100	130
Output Speed	rpm	35	35	90	90	90	140	140
Output Shaft ¹	mm	30,0 40,0	30,0 40,0	30,0 40,0	30,0 40,0	30,0 40,0	30,0 40,0	30,0 40,0
Max. Cycles Per Hour ²	h	45	20	45	30	20	45	30
Limit Switch Range	rev	20	20	20	20	20	20	20
Max. output speed OPEN / CLOSE for frequency inverter operation	rpm	60 / 40	60 / 40	155 / 100	155 / 100	155 / 100	240 / 140	240 / 140

Electrical Properties

Motor Power	kW	1,10	1,50	1,50	2,20	3,00	1,50	2,20
Operating Voltage	V	3N~400	3N~400	3N~400	3N~400	3N~400	3N~400	3N~400
Operating Frequency	Hz	50/60	50/60	50/60	50/60	50/60	50/60	50/60
Operating Current ³	A	5,2/3,0	8,8/5,1	8,8/5,1	11,0/6,5	14,5/8,4	7,5/4,3	12,3/7,2
Fuse Protection, On Site	A	10	10	10	16	16	10	16
Duty Types	ED	S3-%60	S3-%60	S3-%60	S3-%60	S3-%60	S3-%60	S3-%60
IP Protection Class	IP	54	54	54	54	54	54	54
Temperature Range ⁴	°C	-20 +40 (+60)	-20 +40 (+60)	-20 +40 (+60)	-20 +40 (+60)	-20 +40 (+60)	-20 +40 (+60)	-20 +40 (+60)
Working Noise Level	dB (A)	< 70	< 70	< 70	< 70	< 70	< 70	< 70

Application

	PIPE (Ø)	50 - (87) Hz	50 - (87) Hz	50 - (87) Hz	50 - (87) Hz	50 - (87) Hz	50 - (87) Hz	50 - (87) Hz
Weights That Motors Can Lift According To Winding Diameter For PS Roll Door (Kg)	101,6	386 - (271)	515 - (361)	180 - (126)	258 - (180)	322 - (225)	129 - (90)	167 - (117)
	114,0	352 - (246)	469 - (329)	164 - (115)	235 - (164)	293 - (205)	117 - (82)	153 - (107)
	133,0	310 - (217)	413 - (289)	145 - (101)	206 - (145)	258 - (181)	103 - (72)	134 - (94)
	159,0	266 - (186)	355 - (248)	124 - (87)	177 - (124)	222 - (155)	89 - (62)	115 - (81)
	193,7	224 - (157)	298 - (209)	104 - (73)	149 - (104)	186 - (131)	75 - (52)	97 - (68)
	219,1	200 - (140)	267 - (187)	94 - (65)	134 - (94)	167 - (117)	67 - (47)	87 - (61)

Weights That Motors Can Lift According To Winding Diameter For PS Folding Door (Kg)	101,6	455 - (318)	606 - (424)	212 - (149)	303 - (212)	379 - (265)	152 - (106)	197 - (138)
	108,0	429 - (300)	572 - (401)	200 - (140)	286 - (200)	358 - (250)	143 - (100)	186 - (130)
	114,0	408 - (285)	544 - (381)	190 - (133)	272 - (190)	340 - (238)	136 - (95)	177 - (124)
	133,0	352 - (246)	469 - (329)	164 - (115)	235 - (164)	293 - (205)	117 - (82)	153 - (107)
	140,0	335 - (235)	447 - (313)	156 - (109)	223 - (156)	279 - (195)	112 - (78)	145 - (102)
	159,0	297 - (208)	395 - (277)	138 - (97)	198 - (138)	247 - (173)	99 - (69)	129 - (90)
	193,7	245 - (172)	327 - (229)	114 - (80)	163 - (114)	204 - (143)	82 - (57)	106 - (74)
	219,1	217 - (152)	290 - (203)	101 - (71)	145 - (101)	181 - (127)	72 - (51)	94 - (66)

Maximum suspended weight in kg

PS-85-150-140-FI-HD	PS-85-80-180-FI	PS-85-100-180-FI-HD	PS-85-140-180-FI-HD	PS-110-600-30-FI-HD	PS-110-800-30-FI-HD	PS-110-1000-30-FI-HD
---------------------	-----------------	---------------------	---------------------	---------------------	---------------------	----------------------

Mechanical Properties

Output Torque	Nm	150	80	100	140	600	800	1000
Output Speed	rpm	140	180	180	180	30	30	30
Output Shaft ¹	mm	30,0 40,0	30,0 40,0	30,0 40,0	30,0 40,0	55,0	55,0	55,0
Max. Cycles Per Hour ²	h	20	60	60	60	25	20	15
Limit Switch Range	rev	20	20	20	20	20	20	20
Max. output speed OPEN / CLOSE for frequency inverter operation	rpm	240 / 140	300 / 180	300 / 180	300 / 180	50 / 30	50 / 30	50 / 30

Electrical Properties

Motor Power	kW	3,00	1,50	2,20	3,00	2,20	3,00	4,00
Operating Voltage	V	3N~400	3N~400	3N~400	3N~400	3N~400	3N~400	3N~400
Operating Frequency	Hz	50/60	50/60	50/60	50/60	50/60	50/60	50/60
Operating Current ³	A	15,3/9,0	7,5/4,3	12,3/7,2	15,3/9,0	12,3/7,2	15,3/9,0	
Fuse Protection, On Site	A	16	10	16	16	16	16	16
Duty Types	ED	S3-%60	S3-%60	S3-%60	S3-%60	S3-%60	S3-%60	S3-%60
IP Protection Class	IP	54	54	54	54	54	54	54
Temperature Range ⁴	°C	-20 +40 (+60)	-20 +40 (+60)	-20 +40 (+60)	-20 +40 (+60)	-20 +40 (+60)	-20 +40 (+60)	-20 +40 (+60)
Working Noise Level	dB (A)	< 70	< 70	< 70	< 70	< 70	< 70	< 70

Application

	PIPE (Ø)	50 - (87) Hz	50 - (87) Hz	50 - (87) Hz	50 - (87) Hz	50 - (87) Hz	50 - (87) Hz	50 - (87) Hz
Weights That Motors Can Lift According To Winding Diameter For PS Roll Door (Kg)	101,6	193 - (135)	103 - (72)	129 - (90)	180 - (126)	773 - (541)	1031 - (721)	1288 - (902)
	114,0	176 - (123)	94 - (66)	117 - (82)	164 - (115)	704 - (493)	939 - (657)	1173 - (821)
	133,0	155 - (108)	83 - (58)	103 - (72)	145 - (101)	619 - (434)	826 - (578)	1032 - (723)
	159,0	133 - (93)	71 - (50)	89 - (62)	124 - (87)	532 - (372)	709 - (496)	886 - (620)
	193,7	112 - (78)	60 - (42)	75 - (52)	104 - (73)	447 - (313)	597 - (418)	746 - (522)
	219,1	100 - (70)	53 - (37)	67 - (47)	94 - (65)	401 - (281)	535 - (374)	668 - (468)
Weights That Motors Can Lift According To Winding Diameter For PS Folding Door (Kg)	101,6	227 - (159)	106 - (74)	152 - (106)	212 - (149)	909 - (637)	1213 - (849)	1516 - (1061)
	108,0	215 - (150)	100 - (70)	143 - (100)	200 - (140)	858 - (601)	1145 - (801)	1431 - (1001)
	114,0	204 - (143)	95 - (67)	136 - (95)	190 - (133)	815 - (571)	1087 - (761)	1359 - (951)
	133,0	176 - (123)	82 - (57)	117 - (82)	164 - (115)	704 - (493)	939 - (657)	1173 - (821)
	140,0	168 - (117)	78 - (55)	112 - (78)	156 - (109)	670 - (469)	894 - (626)	1117 - (782)
	159,0	148 - (104)	69 - (48)	99 - (69)	138 - (97)	593 - (415)	791 - (554)	998 - (692)
	193,7	123 - (86)	57 - (40)	82 - (57)	114 - (80)	490 - (343)	653 - (457)	817 - (572)
	219,1	109 - (76)	51 - (36)	72 - (51)	101 - (71)	435 - (304)	580 - (406)	725 - (507)

Maximum suspended weight in kg

PS-HIGH SPEED DOOR DRIVES

┌ A safety brake antifall mechanism (parachute) which prevents free fall of the door just in case gear broken are built in gearbox.

1- Output shafts Ø25,0-Ø25,4-Ø30,0-Ø31,75-Ø40,0 mm etc. can be made upon request.

2- One cycle corresponds to two door movements (opening and closing). The specified values represent 10 revolutions of the drive shaft per movement and an even distribution is assumed. Other limit speed ranges, ambient temperature and extra friction affect the value.

3- The current in door drives can reach up to 4 times the rated operating current for limited times.

4- Allowable temperature -20°C..+40°C (+60°C). When using the +40°C..+60°C temperature range, half of the maximum movements per hour should be used.

↳ If frequency inverter drives are used, increasing the driving speed by 10% will cause a 5% decrease in drive torque. This should be considered when choosing a driver.

↳ In gearmotors powered at a frequency of 60Hz (and at the same voltage), multipliers are used for some performance figures: Output torque: 0.83 , and rotations in output: 1.2

↳ For drives with external electromagnetic brakes, Brake inspection should always be performed by qualified service engineers.

└

┌ Selection Of Suitable Drive For Fast Pvc Door

To choose the optimal drive solution, you will need the diameter of the winding spindle in mm and the hanging weight of the door in kg.

With the help of these parameters, the appropriate door drive can be determined easily and reliably using this table.

Values in the table; It takes into account a curtain thickness of 25 mm for spiral PVC doors and 6 mm for folding PVC doors and a 20% safety reserve.

Extra friction and possible diameter changes due to over-winding in the first place should be taken into account when calculating these values.

The PS -FI series is for operation with a frequency converter. PS FI series; is the maximum weights at a frequency of 87 Hz, in the second row in the weight table.

Special solutions can be offered upon request. Please contact us for requests in different speeds and powers.

└

PS-50 WITH MK



INCLUDED



Torque Bracket



Torque Bracket (Optional)



Crank

ACCESSORIES



Control Unit

PAGE 59



EL-ML Special Cable

PAGE 71



380 V Cable

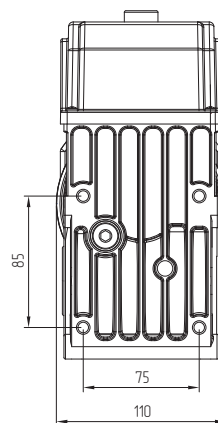
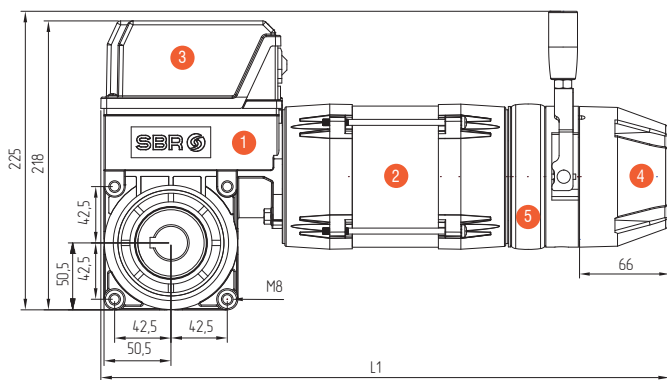
PAGE 72



Opto-Sensor

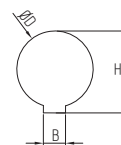
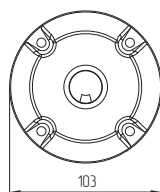
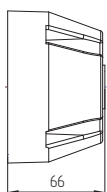
PAGE 72

DIMENSION DRAWING



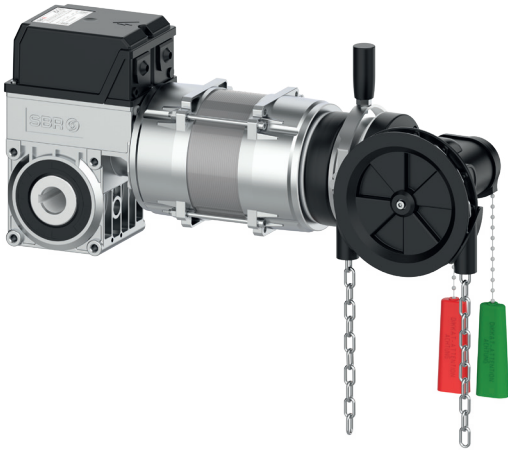
1	Gearbox
2	Motor
3	Limit Switch
4	Hand Crank MK
5	Brake

PS SERIES	L1
PS-50-100-45	410
PS-50-45-95	405
PS-50-60-95	410
PS-50-40-140-FI	410

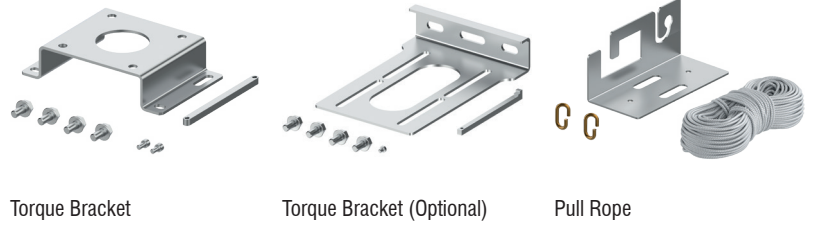


ØD	H	B
D25.0	28,3	8,00
D25.4	28,4	6,35
D30.0	33,3	8,00
D31.75	34,7	6,35

PS-50 WITH C2



INCLUDED



Torque Bracket

Torque Bracket (Optional)

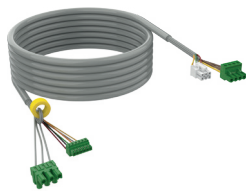
Pull Rope

ACCESSORIES



Control Unit

PAGE 59



EL-ML Special Cable

PAGE 71



380 V Cable

PAGE 72



Opto-Sensor

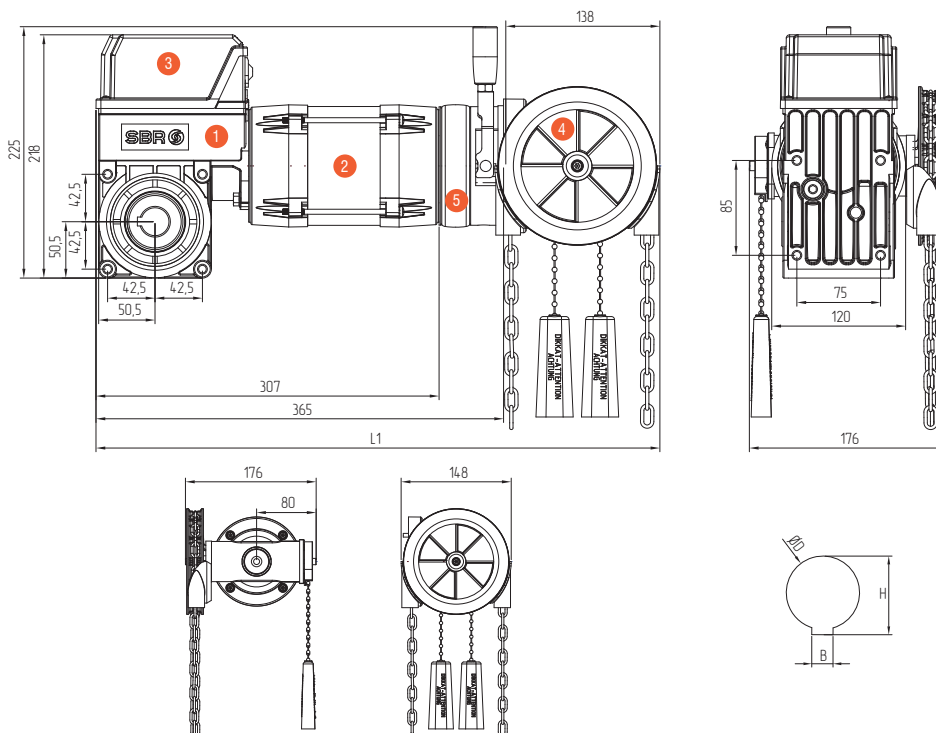
PAGE 72



Chain

PAGE 77

DIMENSION DRAWING

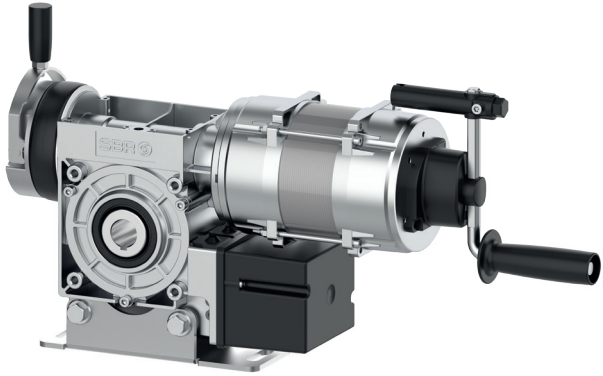


1	Gearbox
2	Motor
3	Limit Switch
4	Hand Crank MK
5	Brake

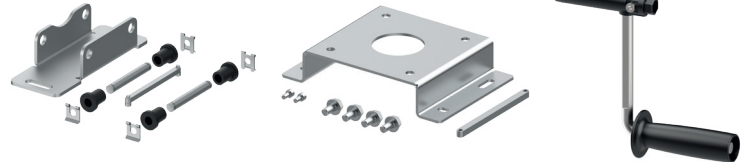
PS SERIES	L1
PS-50-100-45	490
PS-50-45-95	495
PS-50-60-95	490
PS-50-40-140-FI	490

ØD	H	B
D25.0	28,3	8,00
D25.4	28,4	6,35
D30.0	33,3	8,00
D31.75	34,7	6,35

PS-63 WITH MK



INCLUDED



Torque Bracket

Torque Bracket (Optional)

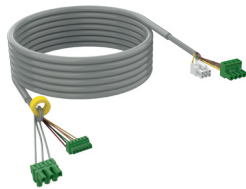
Crank

ACCESSORIES



Control Unit

PAGE 59



EL-ML Special Cable

PAGE 71



380 V Cable

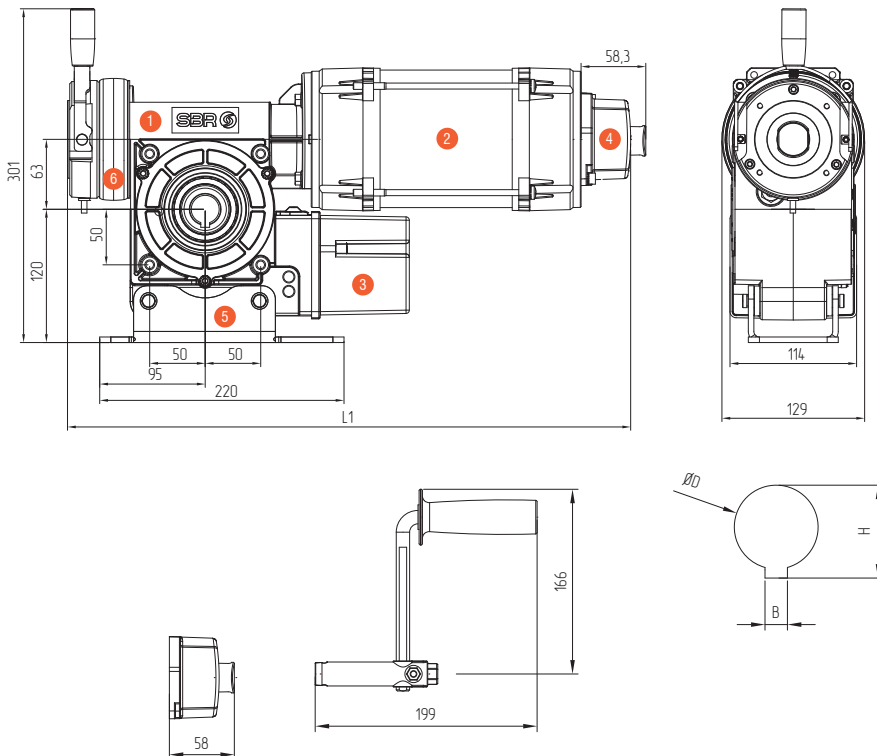
PAGE 72



Opto-Sensor

PAGE 72

DIMENSION DRAWING

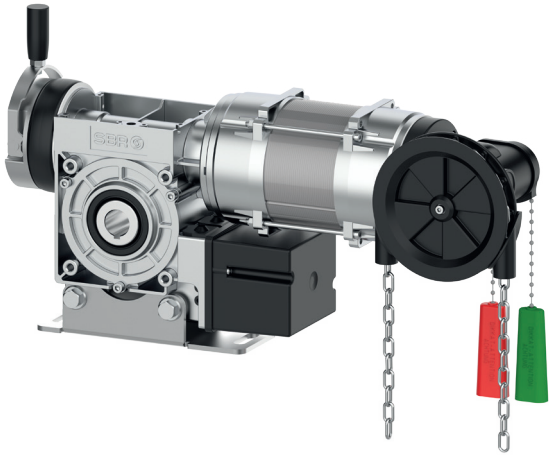


1	Gearbox
2	Motor
3	Limit Switch
4	Hand Crank MK
5	Floating Foot
6	Brake

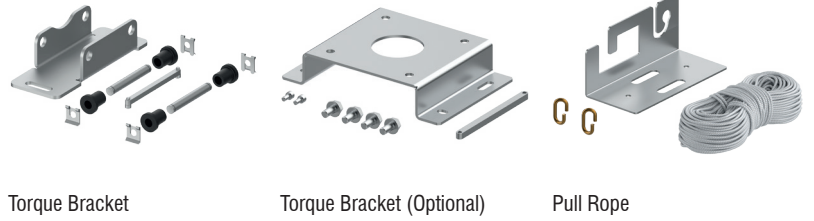
PS SERIES	L1
PS-63-160-45	455
PS-63-80-90	455
PS-63-60-135-FI	455

ØD	H	B
D25.0	28,3	8,00
D30.0	33,3	8,00

PS-63 WITH C2



INCLUDED



Torque Bracket

Torque Bracket (Optional)

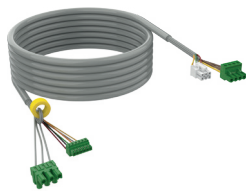
Pull Rope

ACCESSORIES



Control Unit

PAGE 59



EL-ML Special Cable

PAGE 71



380 V Cable

PAGE 72



Opto-Sensor

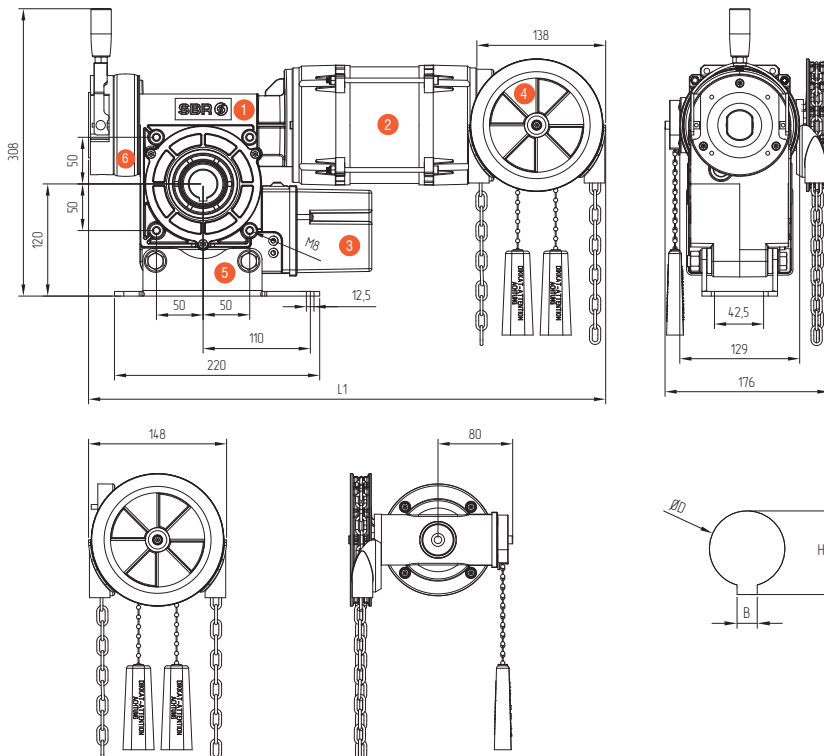
PAGE 72



Chain

PAGE 77

DIMENSION DRAWING

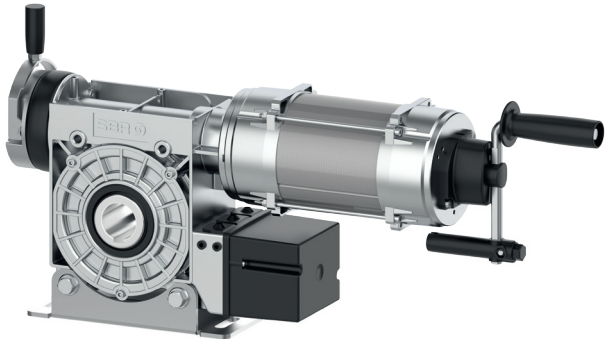


1	Gearbox
2	Motor
3	Limit Switch
4	Hand Crank C2
5	Floating Foot
6	Brake

PS SERIES	L1
PS-63-160-45	535
PS-63-80-90	535
PS-63-60-135-FI	535

ØD	H	B
D25.0	28,3	8,00
D30.0	33,3	8,00

PS-85 WITH MK



INCLUDED



Torque Bracket

Crank

ACCESSORIES



Control Unit

PAGE 59



EL-ML Special Cable

PAGE 71



380 V Cable

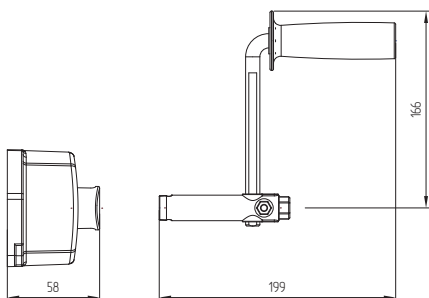
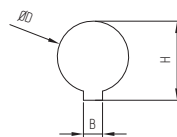
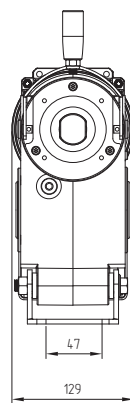
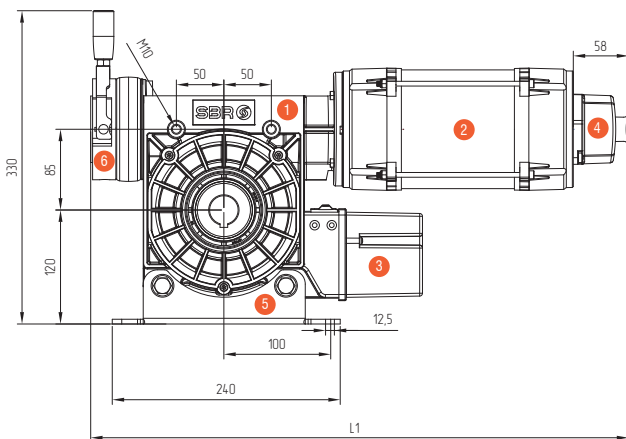
PAGE 72



Opto-Sensor

PAGE 72

DIMENSION DRAWING

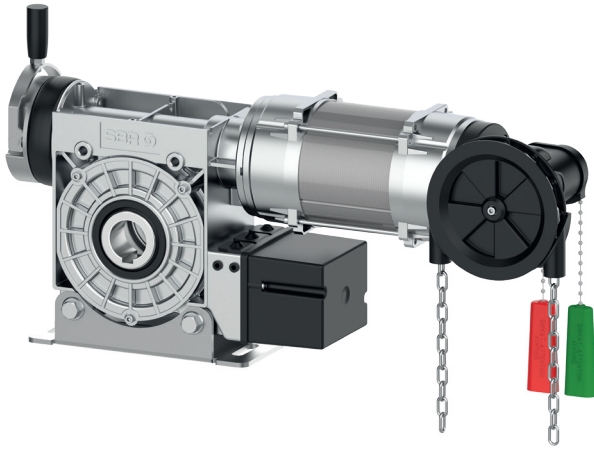


1	Gearbox
2	Motor
3	Limit Switch
4	Hand Crank MK
5	Floating Foot
6	Brake

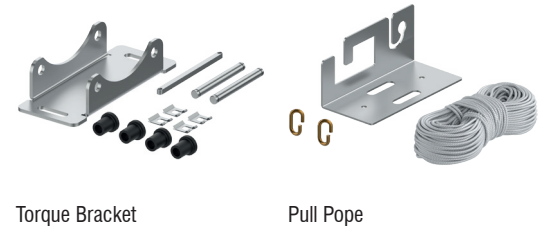
PS SERIES	L1
PS-85-300-35	520
PS-85-140-90	566
PS-85-200-90	570
PS-85-250-90	570
PS-85-100-140-FI	571
PS-85-130-140-FI	575
PS-85-150-140-FI	575

ØD	H	B
D30.0	33,3	8,00
D40.0	43,3	12,00

PS-85 WITH C2



INCLUDED



Torque Bracket

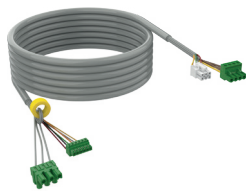
Pull Rope

ACCESSORIES



Control Unit

PAGE 59



EL-ML Special Cable

PAGE 71



380 V Cable

PAGE 72



Opto-Sensor

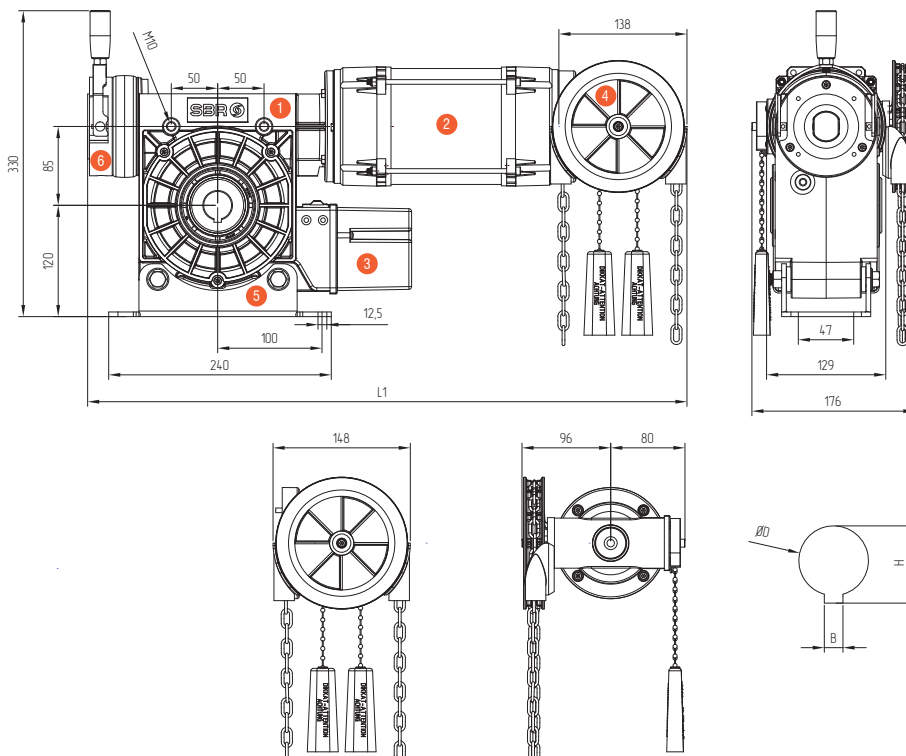
PAGE 72



Chain

PAGE 77

DIMENSION DRAWING



1	Gearbox
2	Motor
3	Limit Switch
4	Hand Crank C2
5	Floating Foot
6	Brake

PS SERIES	L1
PS-85-300-35	600
PS-85-140-90	646
PS-85-200-90	650
PS-85-250-90	650
PS-85-100-140-FI	651
PS-85-130-140-FI	655
PS-85-150-140-FI	655

ØD	H	B
D30.0	33,3	8,00
D40.0	43,3	12,00