

RD SERIES

ROLLER SHUTTER DOORS DRIVES



	RD-50-130-15	RD-63-200-12	RD-85-250-10	RD-85-250-15	RD-85-400-15
--	--------------	--------------	--------------	--------------	--------------

Mechanical Properties

		RD-50-130-15	RD-63-200-12	RD-85-250-10	RD-85-250-15	RD-85-400-15
Output Torque	Nm	130	200	250	250	400
Output Speed	rpm	15	12	10	15	15
Output Shaft ¹	mm	25,0 25,4 30	30,0	30,0 40,0	30,0 40,0	40,0
Max. Cycles Per Hour ²	h	10	8	10	10	9
Limit Switch Range	rev	20	20	20	20	20
Max. output speed OPEN / CLOSE for frequency inverter operation	rpm	26 / 20	17 / 12	18 / 15	26 / 15	26 / 15

Electrical Properties

		RD-50-130-15	RD-63-200-12	RD-85-250-10	RD-85-250-15	RD-85-400-15
Motor Power	kW	0,37	0,55	0,55	0,75	1,10
Operating Voltage	V	3N~400	3N~400	3N~400	3N~400	3N~400
Operating Frequency	Hz	50/60	50/60	50/60	50/60	50/60
Operating Current ³	A	2,6/1,5	3,8/2,2	3,6/2,1	4,4/2,6	6,2/3,6
Fuse Protection, On Site	A	10	10	10	10	10
Duty Types	ED	S3-%60	S3-%60	S3-%60	S3-%60	S3-%60
IP Protection Class	IP	54	54	54	54	54
Temperature Range ⁴	°C	-20 +40 (+60)	-20 +40 (+60)	-20 +40 (+60)	-20 +40 (+60)	-20 +40 (+60)
Working Noise Level	dB (A)	< 70	< 70	< 70	< 70	< 70

Application

	RD-50-130-15	RD-63-200-12	RD-85-250-10	RD-85-250-15	RD-85-400-15
Roller shutters Tube EN 10220 [mm] ^A	101,6	167	258	322	515
	108,0	159	245	307	491
	114,3	152	234	293	468
	133,0	134	206	258	413
	159,0	115	177	222	355
	177,8	--	161	201	322
	193,7	--	--	186	298
	219,1	--	--	--	167

Maximum suspended weight in kg

	RD-85-400-10	RD-85-600-15	RD-110-800-15	RD-110-800-10	RD-110-1200-12	RD-110-1500-7	RD-110-1800-7
--	--------------	--------------	---------------	---------------	----------------	---------------	---------------

Mechanical Properties

		RD-85-400-10	RD-85-600-15	RD-110-800-15	RD-110-800-10	RD-110-1200-12	RD-110-1500-7	RD-110-1800-7
Output Torque	Nm	400	600	800	800	1200	1500	1800
Output Speed	rpm	10	15	15	10	12	7	7
Output Shaft ¹	mm	40	40	55	55	55	55	55
Max. Cycles Per Hour ²	h	9	9	6	7	6	5	5
Limit Switch Range	rev	20	20	20	20	20	20	20
Max. output speed OPEN / CLOSE for frequency inverter operation	rpm	18 / 15	26 / 15	26 / 26	18 / 18	20 / 20	10 / 10	10 / 10

Electrical Properties

		RD-85-400-10	RD-85-600-15	RD-110-800-15	RD-110-800-10	RD-110-1200-12	RD-110-1500-7	RD-110-1800-7
Motor Power	kW	0,75	1,10	1,50	1,10	1,50	1,10	1,50
Operating Voltage	V	3N~400	3N~400	3N~400	3N~400	3N~400	3N~400	3N~400
Operating Frequency	Hz	50/60	50/60	50/60	50/60	50/60	50/60	50/60
Operating Current ³	A	5,1/3,0	5,6/3,3	7,7/4,5	5,6/3,3	7,7/4,5	5,6/3,3	7,7/4,5
Fuse Protection, On Site	A	10	10	10	10	10	10	10
Duty Types	ED	S3-%60	S3-%60	S3-%60	S3-%60	S3-%60	S3-%60	S3-%60
IP Protection Class	IP	54	54	54	54	54	54	54
Temperature Range ⁴	°C	-20 +40 (+60)	-20 +40 (+60)	-20 +40 (+60)	-20 +40 (+60)	-20 +40 (+60)	-20 +40 (+60)	-20 +40 (+60)
Working Noise Level	dB (A)	< 70	< 70	< 70	< 70	< 70	< 70	< 70

Application

	108,0	114,3	133,0	159,0	177,8	193,7	219,1	244,5	273,0	298,5
Roller shutters Tube EN 10220 [mm] ^A	491	468	413	355	322	298	267	--	--	--
	--	703	619	532	483	447	401	363	328	--
	--	--	826	709	643	597	535	484	438	403
	--	--	826	709	643	597	535	484	438	403
	--	--	1239	1064	965	895	802	726	657	605
	--	--	--	1330	1206	1119	1002	908	821	756
	--	--	--	--	1448	1342	1203	1089	985	908

Maximum suspended weight in kg

RD-ROLLER SHUTTER DOOR DRIVES

┌ A safety brake antifall mechanism (parachute) which prevents free fall of the door just in case gear broken are built in gearbox.

1- Output shafts Ø25,0-Ø25,4-Ø30,0-Ø31,75-Ø40,0 mm etc. can be made upon request.

2- One cycle corresponds to two door movements (opening and closing). The specified values represent 10 revolutions of the drive shaft per movement and an even distribution is assumed. For other limit speed ranges or for heavily used doors, drag forces must be reduced. A motor with cooler and higher duty cycle should be selected. (Please ask)

3- Max. current in door drives can reach up to 4 times the rated operating current for limited times.

4- Allowable temperature -20°C..+40°C (+60°C). When using the +40°C..+60°C temperature range, half of the maximum movements per hour should be used.

↳ If frequency inverter drives are used, increasing the driving speed by 10% will cause a 5% decrease in drive torque. This should be considered when choosing a driver.

↳ In gearmotors powered at a frequency of 60Hz (and at the same voltage), multipliers are used for some performance figures: Output torque: 0.83 , and rotations in output: 1.2

┌ A - Selection Of Suitable Drivers For Roller Shutters

To select the optimum drive solution, you will need the diameter of the winding shaft in mm and the suspended weight of the door in kg.

With the help of these parameters, the appropriate roller shutter drive can be determined easily and reliably using this table.

All indicated weights take into account a safety reserve of 20 % and a slat thickness of 25 mm.

In some cases, the friction may be greater and this condition should be taken into account when calculating.

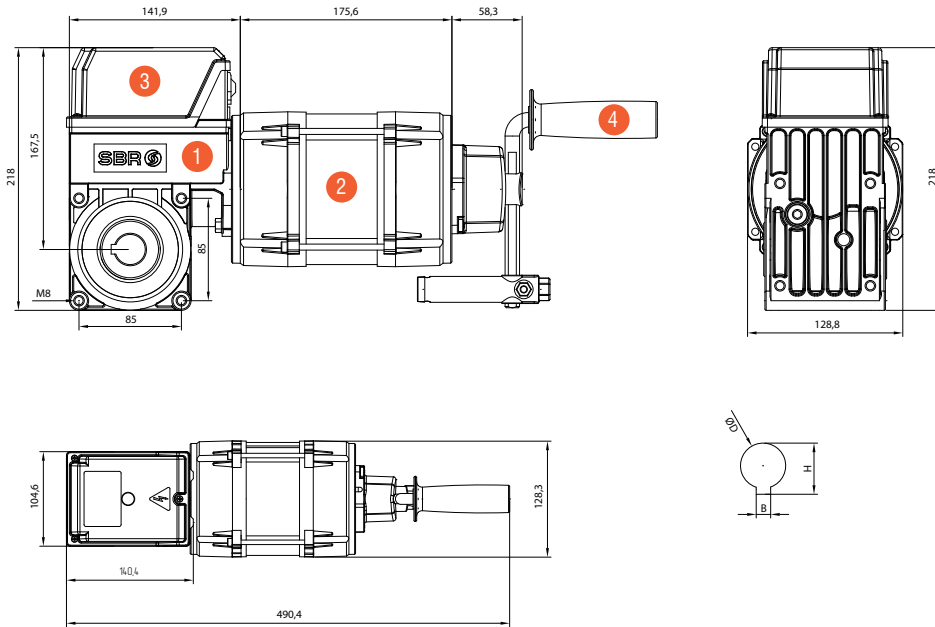
For double-walled, thick or deep-section insulated lamellas, reduce the weight in the table by 20%. The highest load normally occurs after 1-2 rotations of the shutter.

Their extra friction and possible diameter changes due to over-winding, must be taken into account when calculating these values.

Special solutions can be offered upon request. Please contact us for requests in different speeds and powers.

DIMENSIONS

RD-50 WITH MK

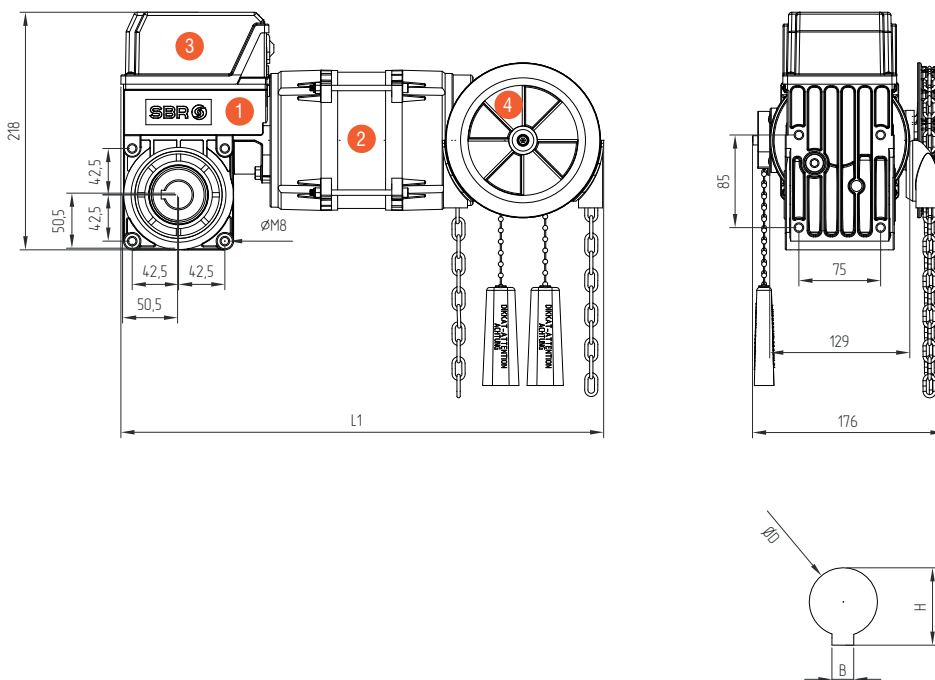


1	Gearbox
2	Motor
3	Limit Switch
4	Hand Crank MK

RD SERIES	L1
RD-50-130-15	363

ØD	H	B
D25.0	28,3	8,00
D25.4	28,4	6,35
D30.0	33,3	8,00

RD-50 WITH C2



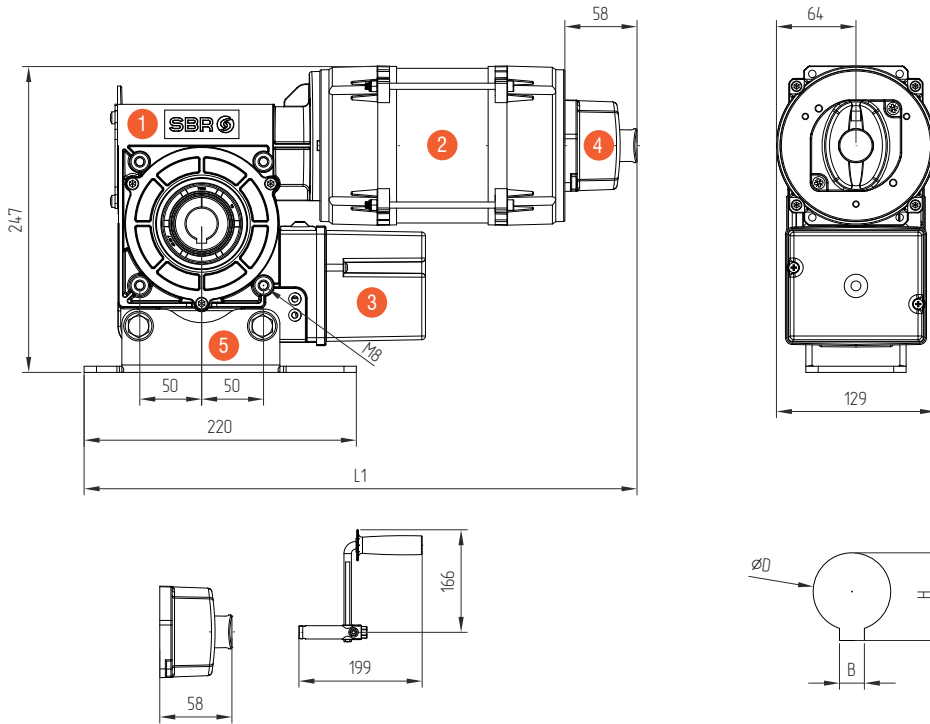
1	Gearbox
2	Motor
3	Limit Switch
4	Hand Crank C2

RD SERIES	L1
RD-50-130-15	443

ØD	H	B
D25.0	28,3	8,00
D25.4	28,4	6,35
D30.0	33,3	8,00

DIMENSIONS

RD-63 WITH MK

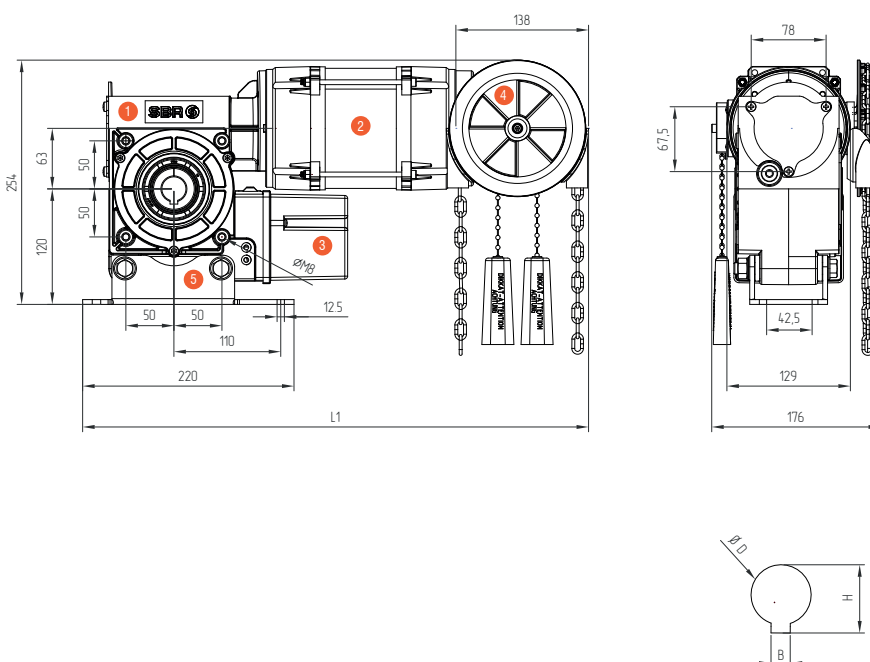


1	Gearbox
2	Motor
3	Limit Switch
4	Hand Crank MK
5	Floating Foot

RD SERIES	L1
RD-63-200-012	447

ØD	H	B
D30.0	33,3	8,00

RD-63 WITH C2



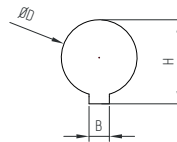
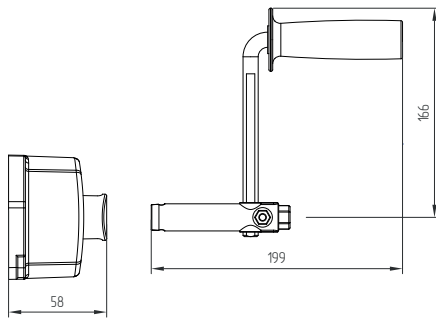
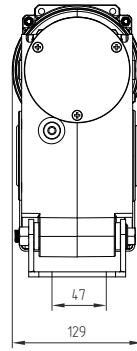
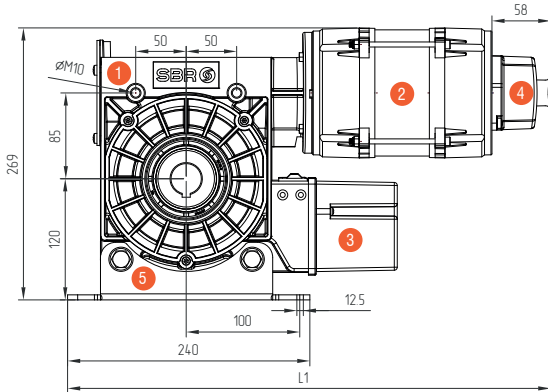
1	Gearbox
2	Motor
3	Limit Switch
4	Hand Crank C2
5	Floating Foot

RD SERIES	L1
RD-63-200-012	527

ØD	H	B
D30.0	33,3	8,00

DIMENSIONS

RD-85 WITH MK

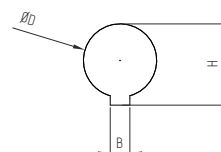
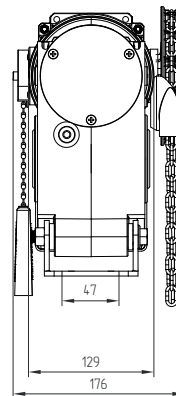
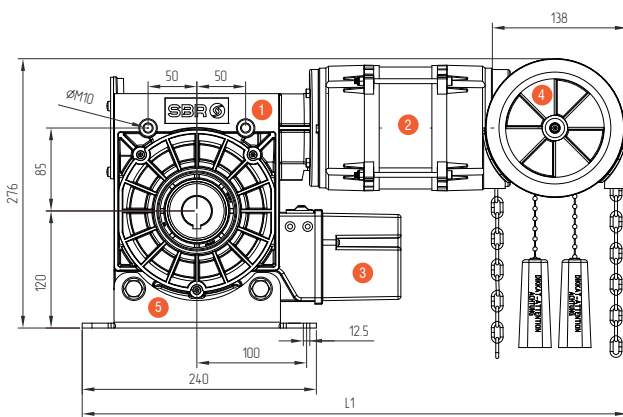


1	Gearbox
2	Motor
3	Limit Switch
4	Hand Crank MK
5	Floating Foot

RD SERIES	L1
RD-85-250-010	499
RD-85-250-015	479
RD-85-400-015	499
RD-85-400-10	524

ØD	H	B
D30.0	33,3	8,00
D40.0	43,3	12,00

RD-85 WITH C2



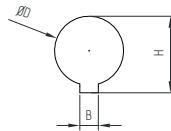
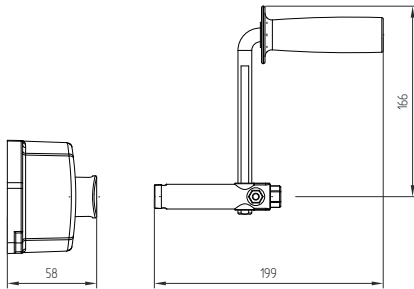
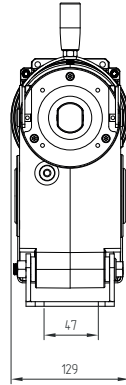
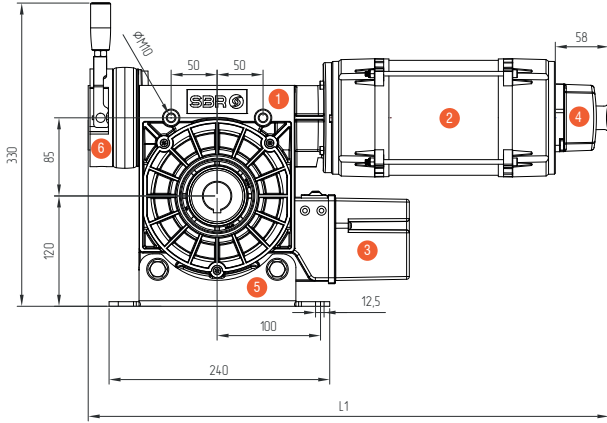
1	Gearbox
2	Motor
3	Limit Switch
4	Hand Crank C2
5	Floating Foot

RD SERIES	L1
RD-85-250-010	579
RD-85-250-015	559
RD-85-400-015	579
RD-85-400-10	604

ØD	H	B
D30.0	33,3	8,00
D40.0	43,3	12,00

DIMENSIONS

RD-85-R2 WITH MK

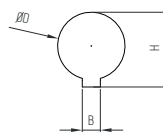
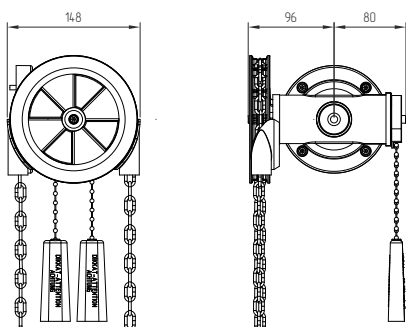
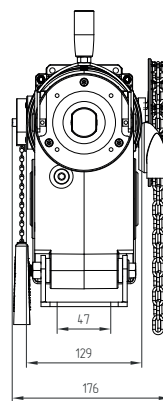
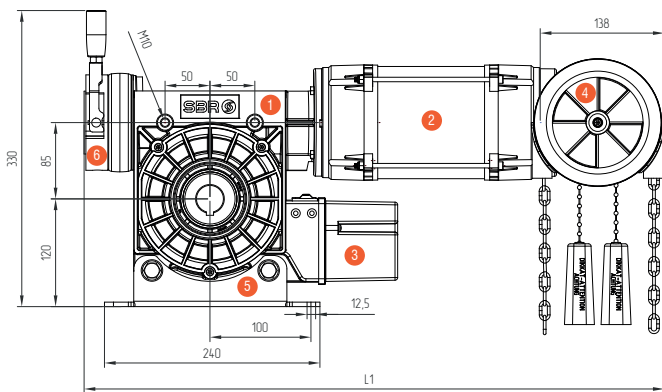


1	Gearbox
2	Motor
3	Limit Switch
4	Hand Crank MK
5	Floating Foot
6	Brake

RD SERIES	L1
RD-85-550-15	547

ØD	H	B
D30.0	33,3	8,00
D40.0	43,3	12,00

RD-85-R2 WITH C2



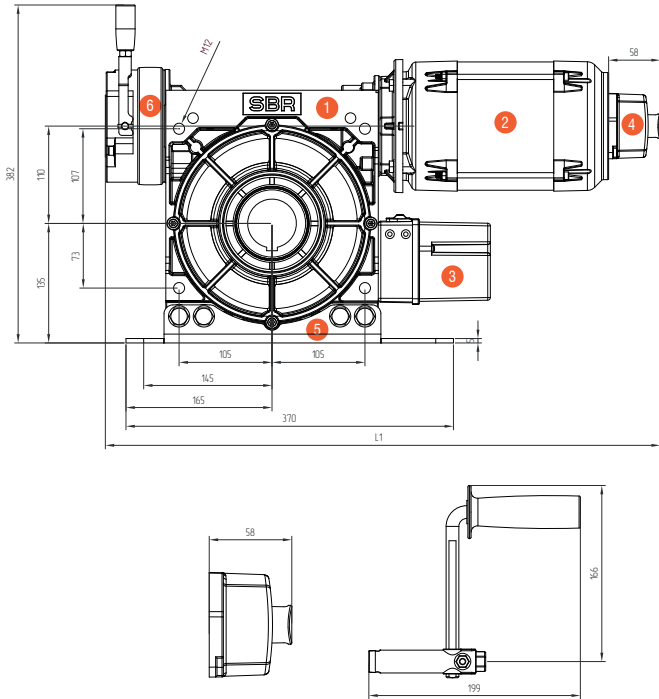
1	Gearbox
2	Motor
3	Limit Switch
4	Hand Crank C2
5	Floating Foot
6	Brake

RD SERIES	L1
RD-85-550-15	627

ØD	H	B
D30.0	33,3	8,00
D40.0	43,3	12,00

DIMENSIONS

RD-110-R2 WITH MK

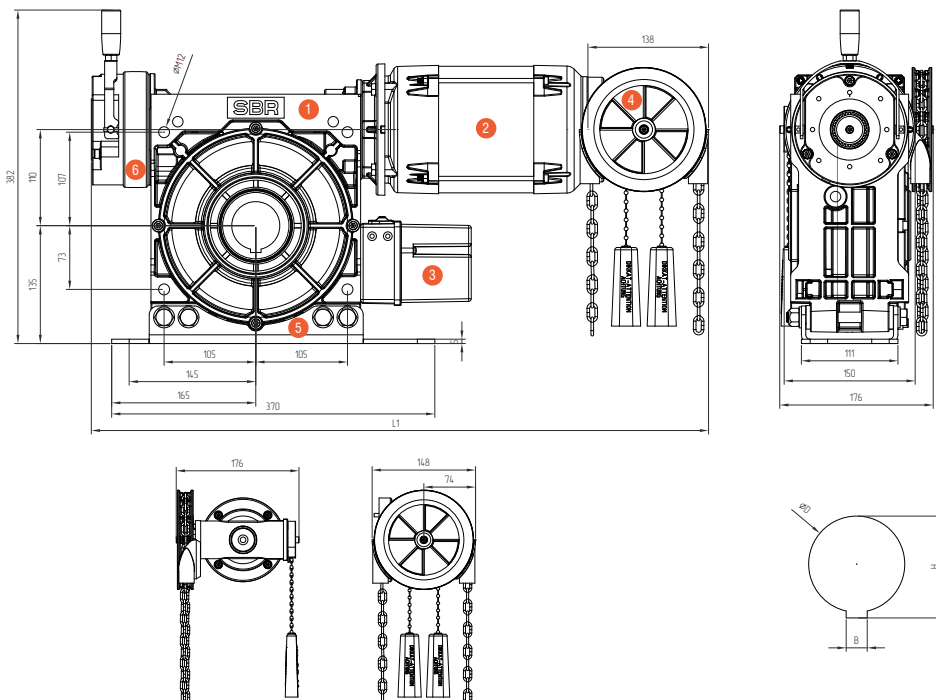


1	Gearbox
2	Motor
3	Limit Switch
4	Hand Crank MK
5	Floating Foot
6	Brake

RD SERIES	L1
RD-110-800-15	695
RD-110-800-10	685
RD-110-1000-10	695

ØD	H	B
D55.0	64,4	16,00

RD-110-R2 WITH C2



1	Gearbox
2	Motor
3	Limit Switch
4	Hand Crank C2
5	Floating Foot
6	Brake

RD SERIES	L1
RD-110-800-15	775
RD-110-800-10	765
RD-110-1000-10	775

ØD	H	B
D55.0	64,4	16,00