

**KD SERIES**

**CHAIN TRANSMISSION  
DOORS DRIVES**



KD-50-100-24	KD-63-170-24	KD-85-250-24	KD-85-350-24	KD-85-450-24	KD-110-600-24	KD-110-800-24-HD	KD-110-1000-24-HD
--------------	--------------	--------------	--------------	--------------	---------------	------------------	-------------------

## Mechanical Properties

	Nm	100	170	250	350	450	600	800	1000
Output Torque	Nm	100	170	250	350	450	600	800	1000
Output Speed	rpm	24	24	24	24	24	24	24	24
Output Shaft <sup>1</sup>	mm	25	30	40	40	40	55	55	55
Max. Cycles Per Hour <sup>2</sup>	h	8	10	11	11	11	7	7	7
Limit Switch Range	rev	20	20	20	20	20	20	20	20

## Electrical Properties

	kW	0,37	0,75	0,75	1,10	1,50	1,50	2,20	3,00
Motor Power	kW	0,37	0,75	0,75	1,10	1,50	1,50	2,20	3,00
Operating Voltage	V	3N~400	3N~400	3N~400	3N~400	3N~400	3N~400	3N~400	3N~400
Operating Frequency	Hz	50/60	50/60	50/60	50/60	50/60	50/60	50/60	50/60
Operating Current <sup>3</sup>	A	2,7/1,6	4,4/2,6	4,6/2,7	5,6/3,3	7,7/4,5	7,7/4,5	12,3/7,2	15,3/9,0
Fuse Protection, On Site	A	10	10	10	10	10	10	15	15
Duty Types	ED	S3-%60	S3-%60	S3-%60	S3-%60	S3-%60	S3-%60	S3-%60	S3-%60
IP Protection Class	IP	54	54	54	54	54	54	54	54
Temperature Range <sup>4</sup>	°C	-20 +40 (+60)	-20 +40 (+60)	-20 +40 (+60)	-20 +40 (+60)	-20 +40 (+60)	-20 +40 (+60)	-20 +40 (+60)	-20 +40 (+60)
Working Noise Level	dB (A)	< 70	< 70	< 70	< 70	< 70	< 70	< 70	< 70

<sup>1</sup> - Output shafts Ø25,0-Ø25,4-Ø30,0-Ø31,75-Ø40,0 mm etc. can be made upon request.

<sup>2</sup> - One cycle corresponds to two door movements (opening and closing). The specified values represent 10 revolutions of the drive shaft per movement and an even distribution is assumed. Other limit speed ranges, ambient temperature and extra friction affect the value.

<sup>3</sup> - The current in door drives can reach up to 4 times the rated operating current for limited times.

<sup>4</sup> - Allowable temperature -20°C.. +40°C (+60°C). When using the +40°C.. +60°C temperature range, half of the maximum movements per hour should be used.

↘ If frequency inverter drives are used, increasing the driving speed by 10% will cause a 5% decrease in drive torque. This should be considered when choosing a driver.

↘ In gearmotors powered at a frequency of 60Hz (and at the same voltage), multipliers are used for some performance figures: Output torque: 0.83, and rotations in output: 1.2

**DRIVES FOR SPECIAL DOORS WITH CHAIN DRIVE**

				DIAMETER (Ø OUTSIDE) OF THE WINDING SHAFT (MM)											
				101,6	108,0	114,0	133,0	159,0	177,8	193,7	219,1	244,5	273,0	298,5	323,9
<b>KD-50-100-24</b>	Chain Drive Ratio	1:2	Kg	644	613	587	516	443	402	373	334	303	274	252	234
			V (cm/sn)	8,0	8,4	8,7	9,9	11,6	12,7	13,7	15,3	16,9	18,7	20,3	21,9
		1:3	Kg	966	920	880	774	665	603	559	501	454	410	378	351
			V (cm/sn)	5,3	5,6	5,8	6,6	7,7	8,5	9,2	10,2	11,3	12,5	13,5	14,6
		1:3,8	Kg	1224	1165	1115	981	842	764	708	635	575	520	479	444
			V (cm/sn)	4,2	4,4	4,6	5,2	6,1	6,7	7,2	8,1	8,9	9,8	10,7	11,5
1:4,5	Kg	1449	1380	1320	1161	997	905	839	752	681	616	567	526		
	V (cm/sn)	3,5	3,7	3,9	4,4	5,1	5,7	6,1	6,8	7,5	8,3	9,0	9,7		
<b>KD-63-170-24</b>	Chain Drive Ratio	1:2	Kg	438	417	399	351	301	273	254	227	206	186	171	159
			V (cm/sn)	8,0	8,4	8,7	9,9	11,6	12,7	13,7	15,3	16,9	18,7	20,3	21,9
		1:3	Kg	657	625	598	526	452	410	380	341	309	279	257	238
			V (cm/sn)	5,3	5,6	5,8	6,6	7,7	8,5	9,2	10,2	11,3	12,5	13,5	14,6
		1:3,8	Kg	832	792	758	667	573	520	482	432	391	354	326	302
			V (cm/sn)	4,2	4,4	4,6	5,2	6,1	6,7	7,2	8,1	8,9	9,8	10,7	11,5
1:4,5	Kg	986	938	898	790	678	615	571	511	463	419	386	358		
	V (cm/sn)	3,5	3,7	3,9	4,4	5,1	5,7	6,1	6,8	7,5	8,3	9,0	9,7		
<b>KD-85-250-24</b>	Chain Drive Ratio	1:2	Kg				516	443	402	373	334	303	274	252	234
			V (cm/sn)				9,9	11,6	12,7	13,7	15,3	16,9	18,7	20,3	21,9
		1:3	Kg				774	665	603	559	501	454	410	378	351
			V (cm/sn)				6,6	7,7	8,5	9,2	10,2	11,3	12,5	13,5	14,6
		1:3,8	Kg				981	842	764	708	635	575	520	479	444
			V (cm/sn)				5,2	6,1	6,7	7,2	8,1	8,9	9,8	10,7	11,5
1:4,5	Kg				1161	997	905	839	752	681	616	567	526		
	V (cm/sn)				4,4	5,1	5,7	6,1	6,8	7,5	8,3	9,0	9,7		
<b>KD-85-350-24</b>	Chain Drive Ratio	1:2	Kg					620	563	522	468	424	383	353	327
			V (cm/sn)					11,6	12,7	13,7	15,3	16,9	18,7	20,3	21,9
		1:3	Kg					931	844	783	702	635	575	529	491
			V (cm/sn)					7,7	8,5	9,2	10,2	11,3	12,5	13,5	14,6
		1:3,8	Kg					1179	1070	992	889	805	728	671	622
			V (cm/sn)					6,1	6,7	7,2	8,1	8,9	9,8	10,7	11,5
1:4,5	Kg					1396	1267	1175	1052	953	862	794	736		
	V (cm/sn)					5,1	5,7	6,1	6,8	7,5	8,3	9,0	9,7		
<b>KD-85-450-24</b>	Chain Drive Ratio	1:2	Kg					798	724	671	601	545	493	454	421
			V (cm/sn)					11,6	12,7	13,7	15,3	16,9	18,7	20,3	21,9
		1:3	Kg					1197	1086	1007	902	817	739	681	631
			V (cm/sn)					7,7	8,5	9,2	10,2	11,3	12,5	13,5	14,6
		1:3,8	Kg					1516	1375	1275	1143	1035	936	862	799
			V (cm/sn)					6,1	6,7	7,2	8,1	8,9	9,8	10,7	11,5
1:4,5	Kg					1795	1629	1510	1353	1226	1108	1021	947		
	V (cm/sn)					5,1	5,7	6,1	6,8	7,5	8,3	9,0	9,7		

## DRIVES FOR SPECIAL DOORS WITH CHAIN DRIVE

			TDIAMETER (Ø OUTSIDE) OF THE WINDING SHAFT (MM)												
			101,6	108,0	114,0	133,0	159,0	177,8	193,7	219,1	244,5	273,0	298,5	323,9	
<b>KD-110-600-24</b>	Chain Drive Ratio	1:2	Kg					1064	965	895	802	726	657	605	561
		V (cm/sn)					11,6	12,7	13,7	15,3	16,9	18,7	20,3	21,9	
	1:3	Kg					1596	1448	1342	1203	1089	985	908	841	
		V (cm/sn)					7,7	8,5	9,2	10,2	11,3	12,5	13,5	14,6	
	1:3,8	Kg					2021	1834	1700	1523	1380	1248	1150	1066	
		V (cm/sn)					6,1	6,7	7,2	8,1	8,9	9,8	10,7	11,5	
1:4,5	Kg					2393	2171	2014	1804	1634	1478	1361	1262		
	V (cm/sn)					5,1	5,7	6,1	6,8	7,5	8,3	9,0	9,7		
<b>KD-110-800-24</b>	Chain Drive Ratio	1:2	Kg						1287	1193	1069	968	876	807	748
		V (cm/sn)							12,7	13,7	15,3	16,9	18,7	20,3	21,9
	1:3	Kg							1930	1790	1604	1452	1314	1210	1122
		V (cm/sn)							8,5	9,2	10,2	11,3	12,5	13,5	14,6
	1:3,8	Kg							2445	2267	2031	1840	1664	1533	1421
		V (cm/sn)							6,7	7,2	8,1	8,9	9,8	10,7	11,5
1:4,5	Kg							2895	2685	2405	2179	1970	1815	1683	
	V (cm/sn)							5,7	6,1	6,8	7,5	8,3	9,0	9,7	
<b>KD-110-1000-24</b>	Chain Drive Ratio	1:2	Kg						1608	1492	1336	1210	1095	1008	935
		V (cm/sn)							12,7	13,7	15,3	16,9	18,7	20,3	21,9
	1:3	Kg							2413	2237	2004	1816	1642	1513	1402
		V (cm/sn)							8,5	9,2	10,2	11,3	12,5	13,5	14,6
	1:3,8	Kg							3056	2834	2539	2300	2080	1916	1776
		V (cm/sn)							6,7	7,2	8,1	8,9	9,8	10,7	11,5
1:4,5	Kg							3619	3356	3007	2723	2463	2269	2104	
	V (cm/sn)							5,7	6,1	6,8	7,5	8,3	9,0	9,7	

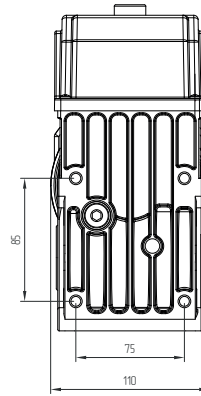
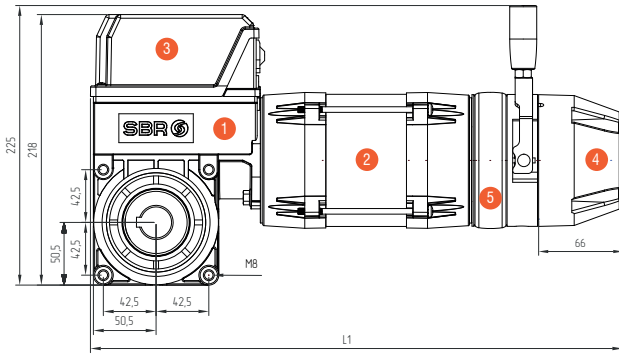
All indicated weights in the table take into account a safety reserve of 20 % and a slat thickness of 25 mm.  
 In some cases, the friction may be greater and this condition should be taken into account when calculating.  
 Their extra friction and possible diameter changes due to over-winding, must be taken into account when calculating these values.

- ↘ If frequency inverter drives are used, increasing the driving speed by 10% will cause a 5% decrease in drive torque. This should be considered when choosing a driver.
- ↘ In gearmotors powered at a frequency of 60Hz (and at the same voltage), multipliers are used for some performance figures: Output torque: 0.83 , and rotations in output: 1.2

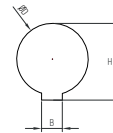
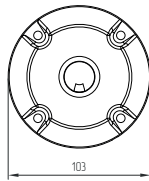
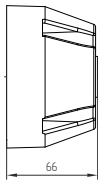
Special solutions can be offered upon request. Please contact us for requests in different speeds and powers.

# DIMENSIONS

## KD-50 WITH MK



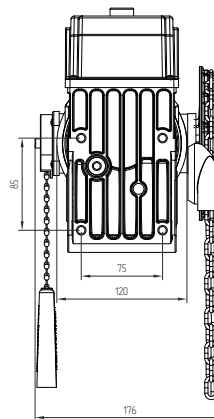
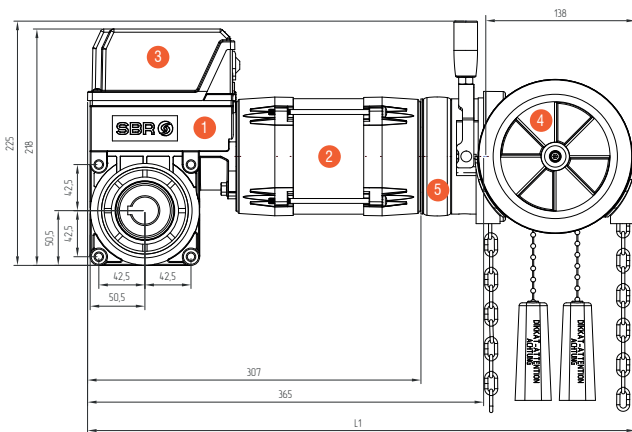
1	Gearbox
2	Motor
3	Limit Switch
4	Hand Crank MK
5	Brake



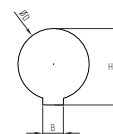
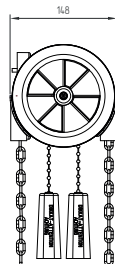
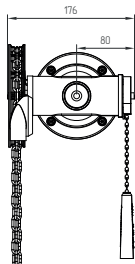
KD SERIES	L1
KD-50-100-24	410

ØD	H	B
D25.0	28,3	8,00

## KD-50 WITH C2



1	Gearbox
2	Motor
3	Limit Switch
4	Hand Crank C2
5	Brake

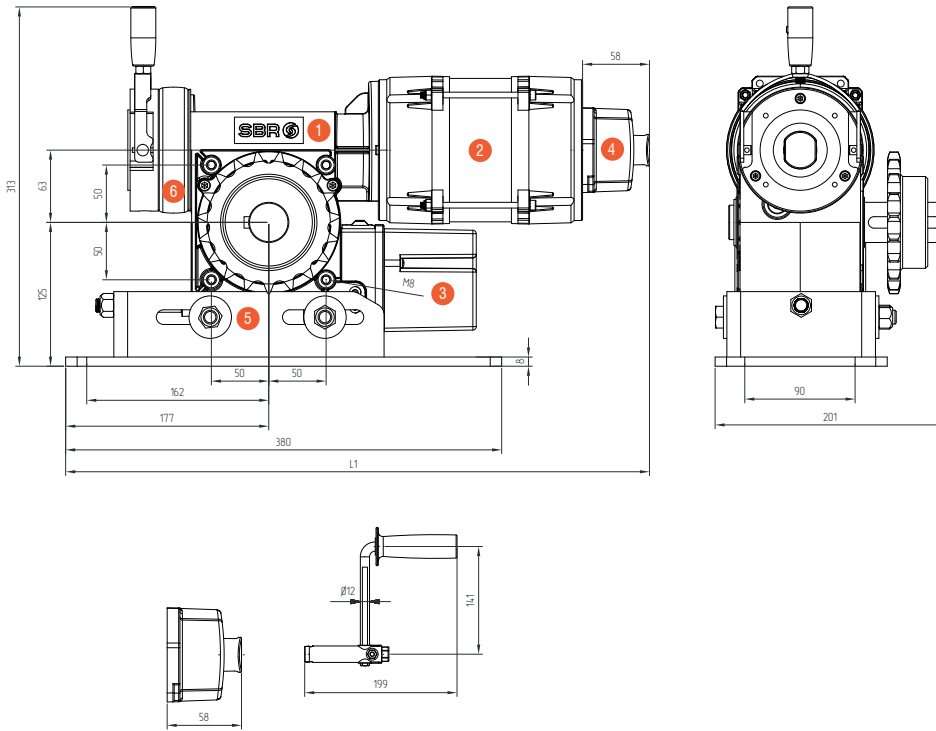


KD SERIES	L1
KD-50-100-24	463

ØD	H	B
D25.0	28,3	8,00

# DIMENSIONS

## KD-63 WITH MK

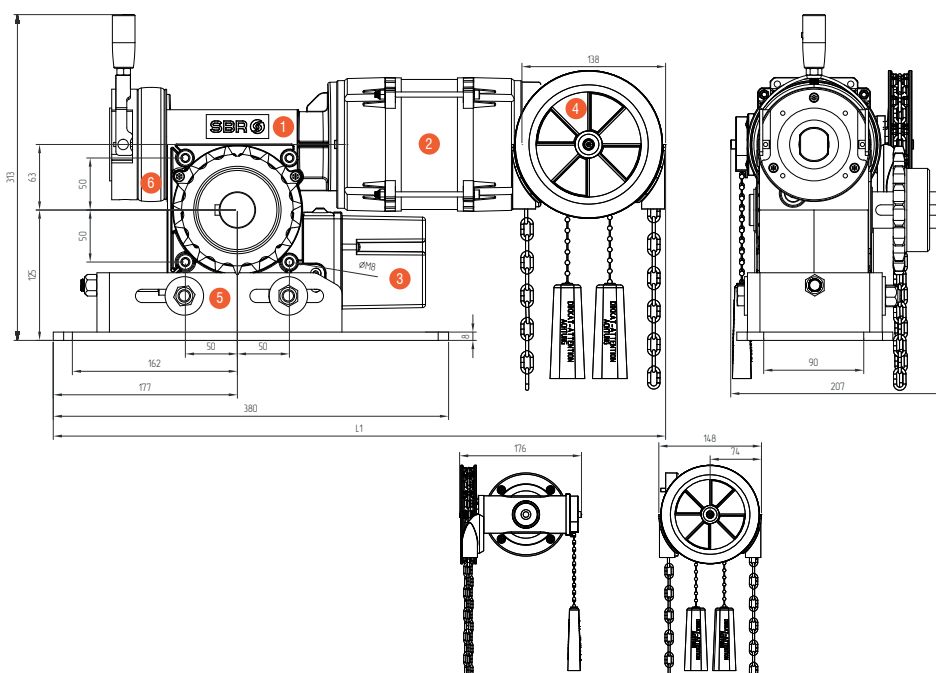


1	Gearbox
2	Motor
3	Limit Switch
4	Hand Crank MK
5	Floating Foot
6	Brake

KD SERIES	L1
KD-63-170-24	455

ØD	H	B
D30.0	33,3	8,00

## KD-63 WITH C2



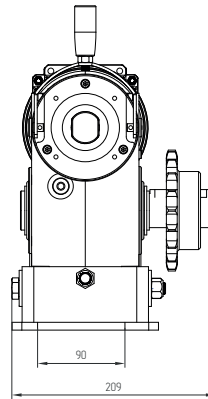
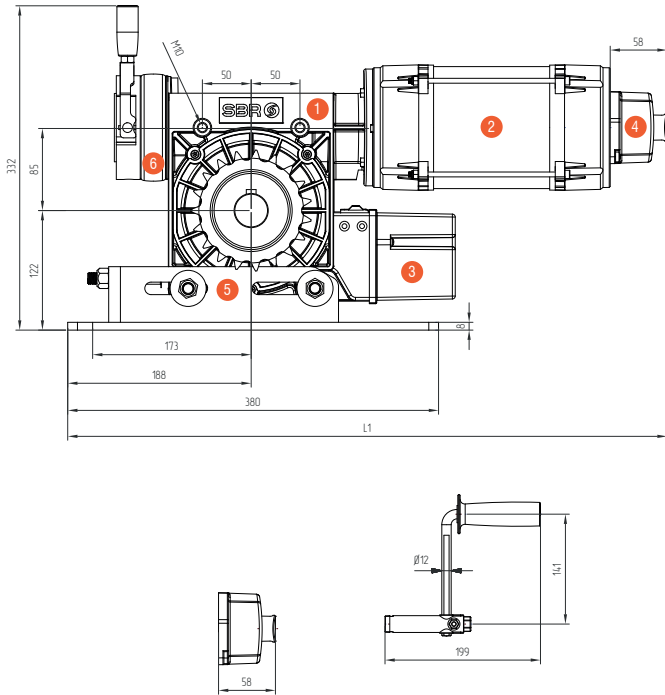
1	Gearbox
2	Motor
3	Limit Switch
4	Hand Crank C2
5	Floating Foot
6	Brake

KD SERIES	L1
KD-63-170-24	534

ØD	H	B
D30.0	33,3	8,00

# DIMENSIONS

## KD-85 WITH MK

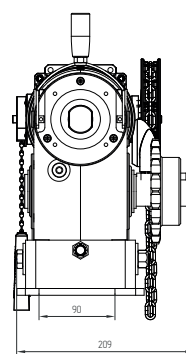
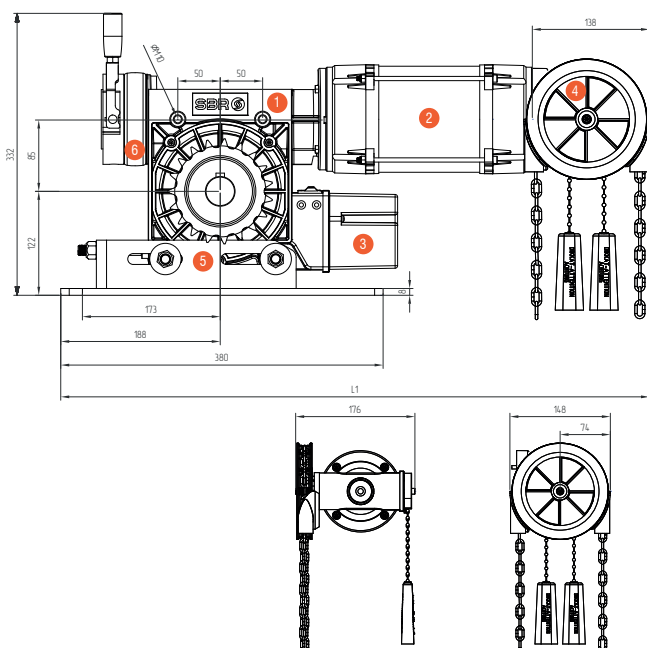


1	Gearbox
2	Motor
3	Limit Switch
4	Hand Crank MK
5	Floating Foot
6	Brake

KD SERIES	L1
KD-85-250-24	539
KD-85-350-24	568
KD-85-450-24	614

ØD	H	B
D40.0	43,3	12,00

## KD-85 WITH C2



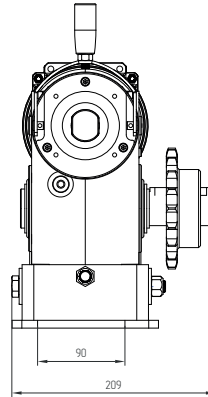
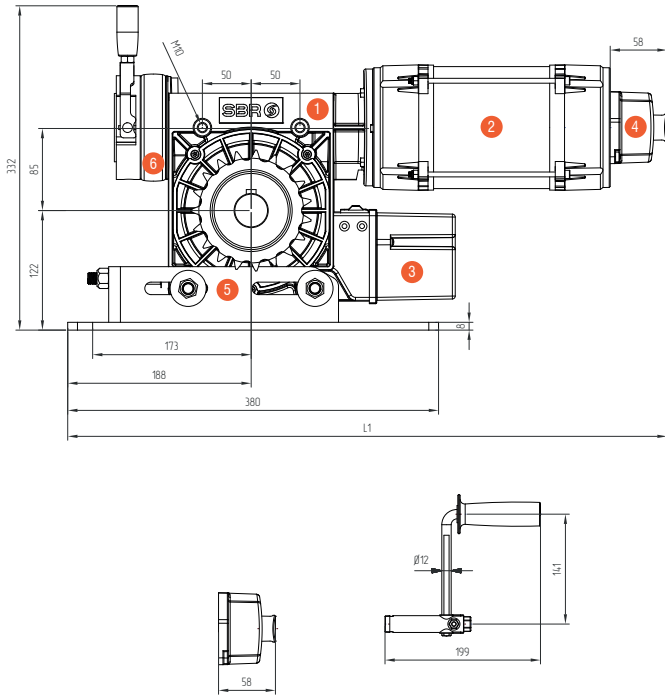
1	Gearbox
2	Motor
3	Limit Switch
4	Hand Crank C2
5	Floating Foot
6	Brake

KD SERIES	L1
KD-85-250-24	619
KD-85-350-24	648
KD-85-450-24	694

ØD	H	B
D40.0	43,3	12,00

# DIMENSIONS

## KD-110 WITH MK

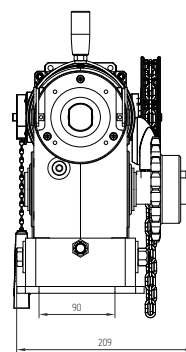
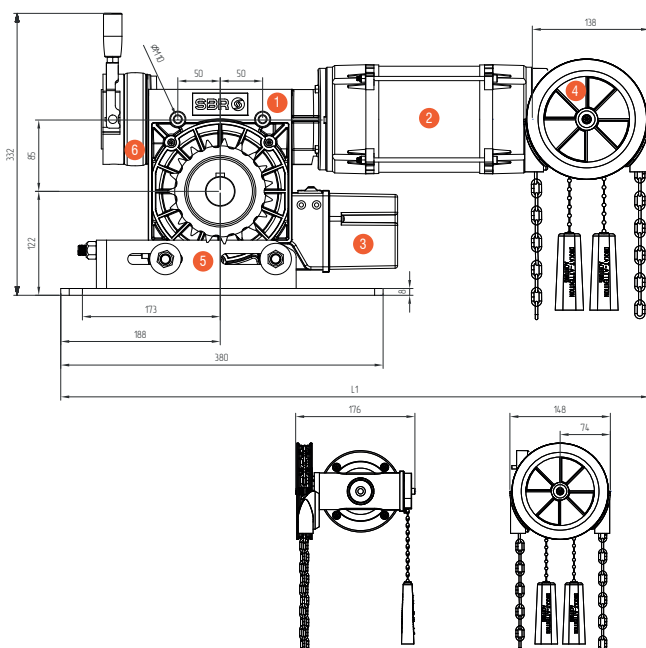


1	Gearbox
2	Motor
3	Limit Switch
4	Hand Crank MK
5	Floating Foot
6	Brake

KD SERIES	L1
KD-110-600-24	711
KD-110-750-24	715
KD-110-1000-24	715

ØD	H	B
D55.0	64,4	16,00

## KD-110 WITH C2



1	Gearbox
2	Motor
3	Limit Switch
4	Hand Crank C2
5	Floating Foot
6	Brake

KD SERIES	L1
KD-110-600-24	791
KD-110-750-24	794
KD-110-1000-24	794

ØD	H	B
D55.0	64,4	16,00