

SD SERIES

SPRING-BALANCED SECTIONAL DOORS DRIVES



		SD-50-100-24	SD-50-100-30	SD-50-110-24	SD-50-130-15	SD-50-120-20	SD-50-140-20	SD-50-80-30-FI	SD-50-100-48-FI
--	--	--------------	--------------	--------------	--------------	--------------	--------------	----------------	-----------------

Mechanical Properties

		SD-50-100-24	SD-50-100-30	SD-50-110-24	SD-50-130-15	SD-50-120-20	SD-50-140-20	SD-50-80-30-FI	SD-50-100-48-FI
Output Torque	Nm	100	100	110	130	120	140	80	100
Output Speed	rpm	24	30	24	15	20	20	15-45	15-80
Output Shaft ¹	mm	25,4	25,4	25,4	25,4 31,75	25,4 31,75	25,4 31,75	25,4	25,4 31,75
Max. Cycles Per Hour ²	h	12	14	10	10	8	8	25	20
Limit Switch Range	rev	20	20	20	20	20	20	20	20
Max. Output Speed OPEN / CLOSE For Frequency Inverter Operation	rpm	42 / 30	52 / 30	42 / 30	26 / 20	34 / 30	34 / 30	--	--
Door Size ³	m ²	30	30	45	45	50	50	30	45

Electrical Properties

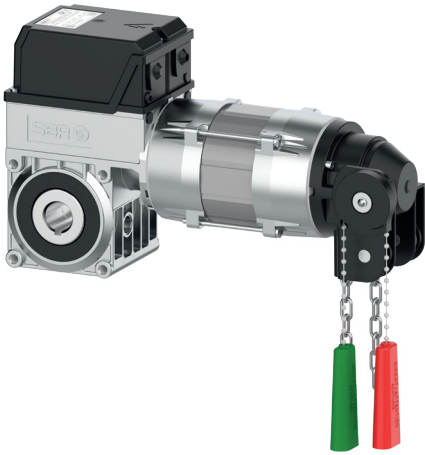
		SD-50-100-24	SD-50-100-30	SD-50-110-24	SD-50-130-15	SD-50-120-20	SD-50-140-20	SD-50-80-30-FI	SD-50-100-48-FI
Motor Power	KW	0,37	0,55	0,55	0,37	0,37	0,55	0,55	0,75
Operating Voltage	V	3N~400	3N~400	3N~400	3N~400	3N~400	3N~400	1N~230	1N~230
Operating Frequency	Hz	50/60	50/60	50/60	50/60	50/60	50/60	50	50
Operating Current ⁴	A	2,7/1,6	3,8/2,2	3,8/2,2	2,3/1,3	1,8/1,1	3,9/2,3	5,0	6,0
Fuse Protection, On Site	A	10	10	10	10	10	10	10	10
Duty Types	ED	S3-%60	S3-%60	S3-%60	S3-%60	S3-%60	S3-%60	S3-%60	S3-%60
IP Protection Class	IP	54	54	54	54	54	54	54	54
Temperature Range ⁵	°C	-20 40 (+60)	-20 +40 (+60)	-20 40 (+60)	-20 +40 (+60)	-20 +40 (+60)	-20 40 (+60)	-20 +40 (+60)	-20 +40 (+60)
Working Noise Level	dB (A)	< 70	< 70	< 70	< 70	< 70	< 70	< 70	< 70

- 1- Output shafts Ø25,0-Ø25,4-Ø30,0-Ø31,75 mm etc. can be made upon request.
- 2- One cycle corresponds to two door movements (opening and closing). The specified values represent 10 revolutions of the drive shaft per movement and an even distribution is assumed. Other limit speed ranges, ambient temperature and extra friction affect the value.
- 3- The values in the table take into account a weight of 13 kg/m² and assume full spring balance. In some cases the friction may be greater and this must be taken into account when calculating the values.
- 4- The current in door drives can reach up to 4 times the rated operating current for limited times.
- 5- Allowable temperature -20°C..+40°C (+60°C). When using the +40°C..+60°C temperature range, half of the maximum movements per hour should be used.

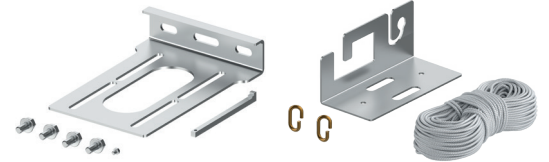
↘ If frequency inverter drives are used, increasing the driving speed by 10% will cause a 5% decrease in drive torque. This should be considered when choosing a driver.

↘ In gearmotors powered at a frequency of 60Hz (and at the same voltage), multipliers are used for some performance figures: Output torque: 0,83 , and rotations in output: 1,2

SD-50 WITH C1



INCLUDED



Torque Bracket

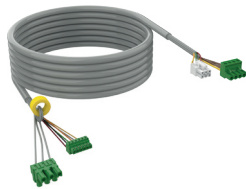
Pull Rope

ACCESSORIES



Control Unit

PAGE 59



EL-ML Special Cable

PAGE 71



380 V Cable

PAGE 72



Opto-Sensor

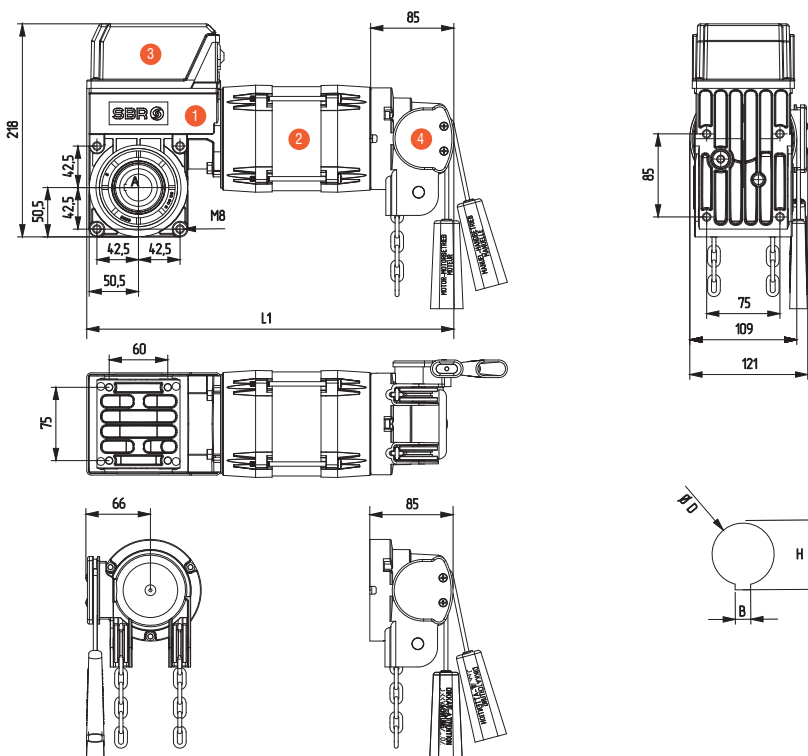
PAGE 72



Chain

PAGE 77

DIMENSION DRAWING

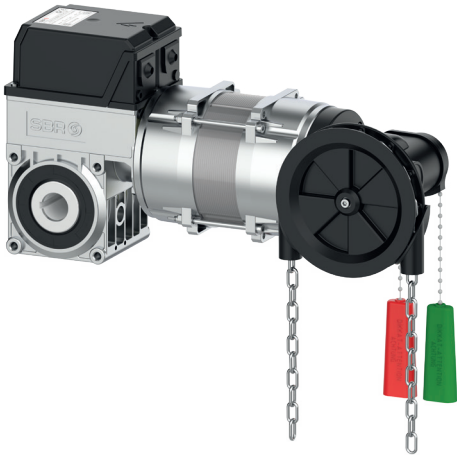


1	Gearbox
2	Motor
3	Limit Switch
4	Hand Crank C1

SD SERIES	L1
SD-50-100-24	376
SD-50-100-30	391
SD-50-110-24	391
SD-50-130-15	390
SD-50-140-20	410
SD-50-80-30-FI	391

ØD	H	B
D25.4	28,4	6,35
D31.75	34,7	6,35

SD-50 WITH C2



INCLUDED



Torque Bracket



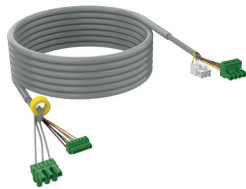
Pull Rope

ACCESSORIES



Control Unit

PAGE 59



EL-ML Special Cable

PAGE 71



380 V Cable

PAGE 72



Opto-Sensor

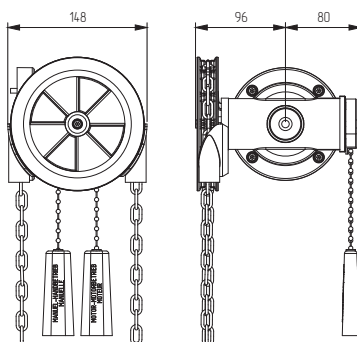
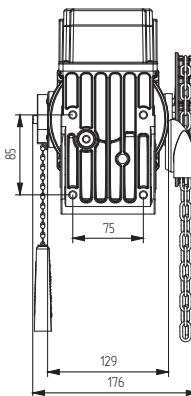
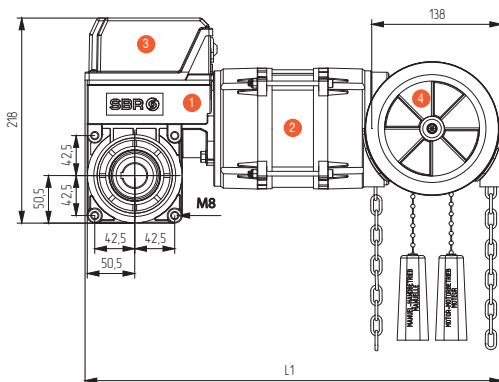
PAGE 72



Chain

PAGE 77

DIMENSION DRAWING

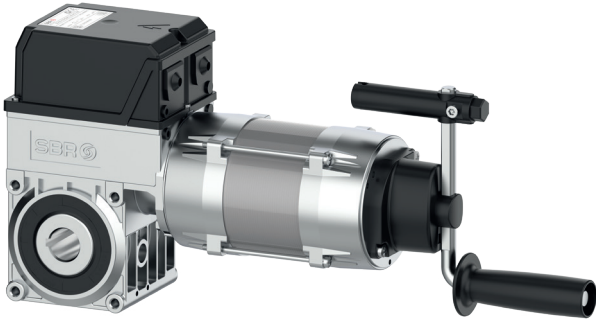


1	Gearbox
2	Motor
3	Limit Switch
4	Hand Crank C2

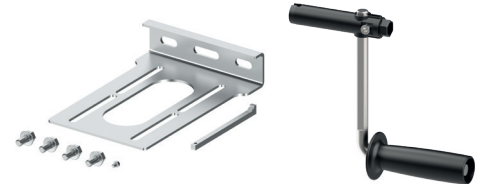
SD SERIES	L1
SD-050-0130-015	443
SD-050-0140-020	463
SD-050-0100-048-FI	453

ØD	H	B
D25.4	28,4	6,35
D31.75	34,7	6,35

SD-50 WITH MK



INCLUDED



Torque Bracket

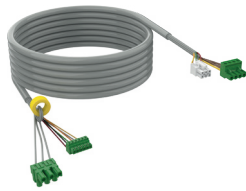
Crank

ACCESSORIES



Control Unit

PAGE 59



EL-ML Special Cable

PAGE 71



380 V Cable

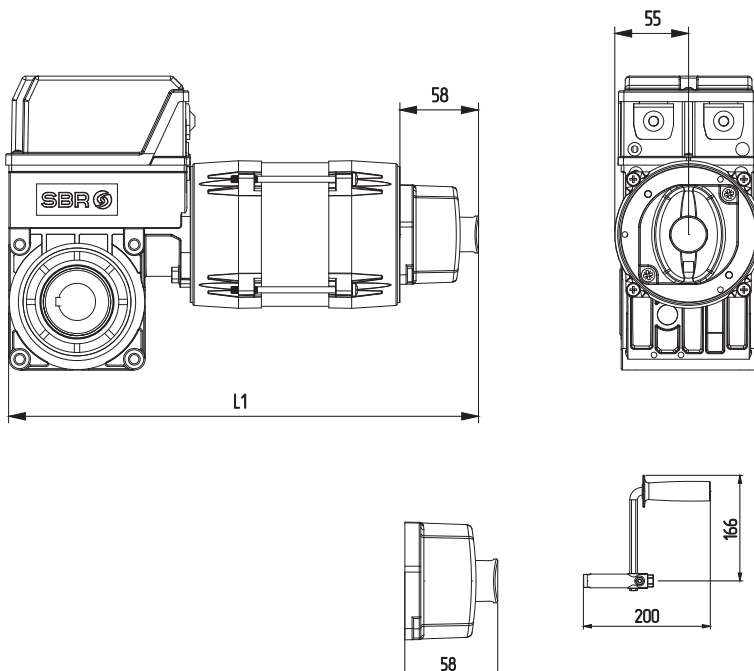
PAGE 72



Opto-Sensor

PAGE 72

DIMENSION DRAWING

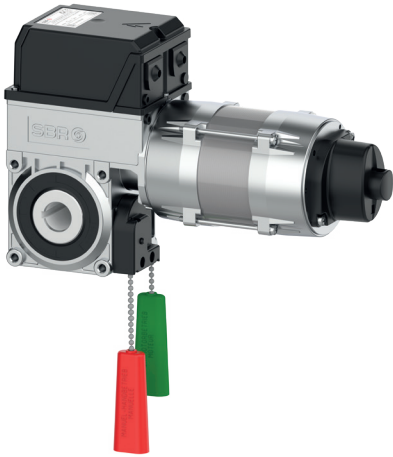


1	Gearbox
2	Motor
3	Limit Switch
4	Hand Crank MK

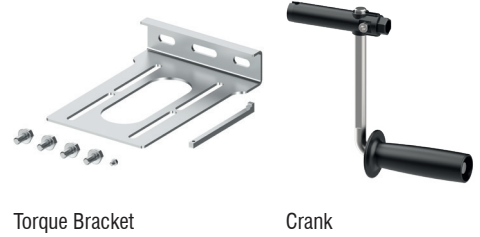
SD SERIES	L1
SD-050-0130-015	443
SD-050-0140-020	463
SD-050-0100-048-FI	453

ØD	H	B
D25.4	28,4	6,35
D31.75	34,7	6,35

SD-50 WITH RK



INCLUDED



Torque Bracket

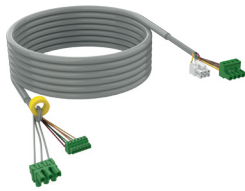
Crank

ACCESSORIES



Control Unit

PAGE 59



EL-ML Special Cable

PAGE 71



380 V Cable

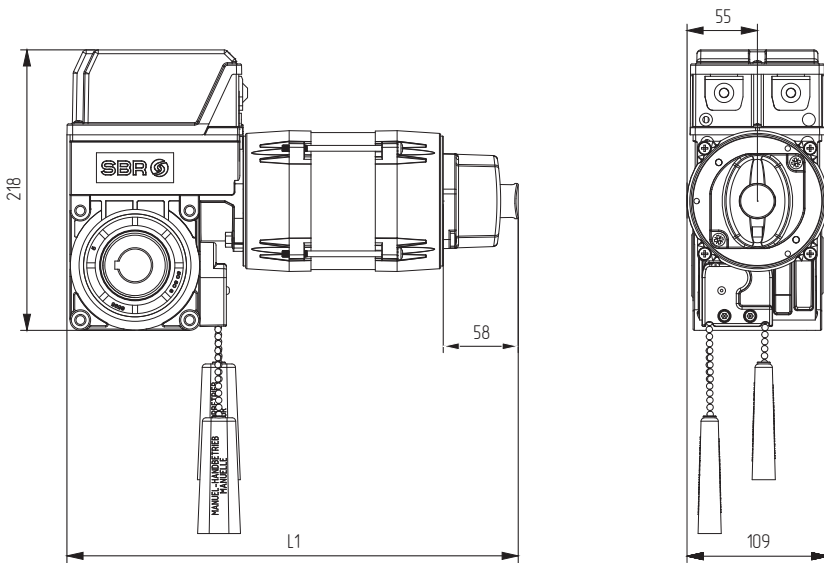
PAGE 72



Opto-Sensor

PAGE 72

DIMENSION DRAWING



1	Gearbox
2	Motor
3	Limit Switch
4	Hand Crank MK

SD SERIES	L1
SD-050-0130-015	443
SD-050-0140-020	463
SD-050-0100-048-FI	453

ØD	H	B
D25.4	28,4	6,35
D31.75	34,7	6,35